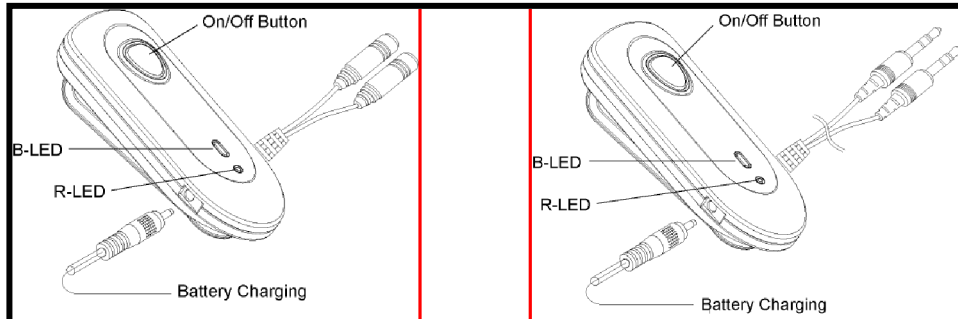


Connection of the FlexyMike Bluetooth Transmitter (FMK03) under Windows Vista or Windows 7 (without any other third party software!)

1. BASIC OPERATING INSTRUCTIONS

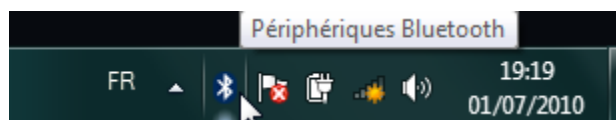


Our models **FMK03** (<http://www.speechware.be/en/verArticulo.php?id=1671>) --and **FMK04**-- feature a couple of Light Emitting Diodes (LEDs), which lights up in Blue (**B-LED**) and Red (**R-LED**) colour, with the following meaning:

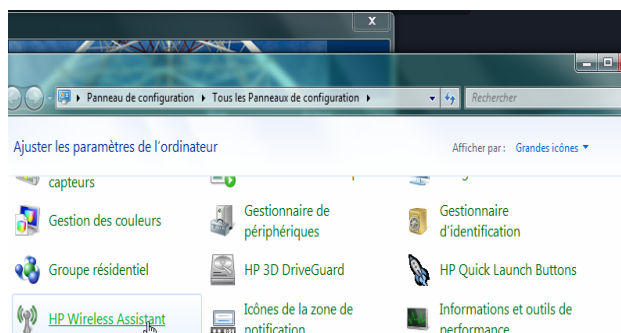
- **B-LED** flashing twice quickly every 2 sec.: Power On and "Standby" (low consumption) mode
- **B-LED** flashing once slowly every 2 sec.: "**Link**" (transmission) mode
- **B-LED/R-LED** flashing alternatively: "**Pairing**" mode to establish a connection **for the first time**
- **R-LED** flashes quickly (while using it): Low battery mode
- **R-LED** lights on: Charging mode
- **R-LED** flashes twice quickly and stops: Power Off mode.

2. INSTALLATION OF FULL DUPLEX BLUETOOTH TRANSMITTER (FMK03) UNDER WINDOWS VISTA OR WINDOWS 7 (WITHOUT ANY THIRD PARTY SOFTWARE)

- Put the FlexyMike Bluetooth Transmitter in "**Pairing**" mode (check above): press the On/Off button for about 5 s. and until the **B-LED/R-LED** flash alternatively. Make sure that before you press the On/Off button, the Transmitter is Off.
- Check for the Bluetooth icon of your Windows bar (in the bottom right hand corner of your screen):



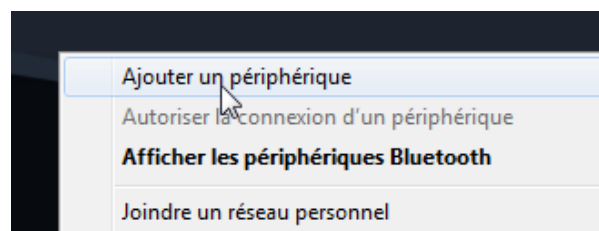
If you cannot see it, then Bluetooth may be disabled. To enable it, select *Start > Control Panel > Wireless Assistant* and press enable ("Allumer") Bluetooth in your computer:



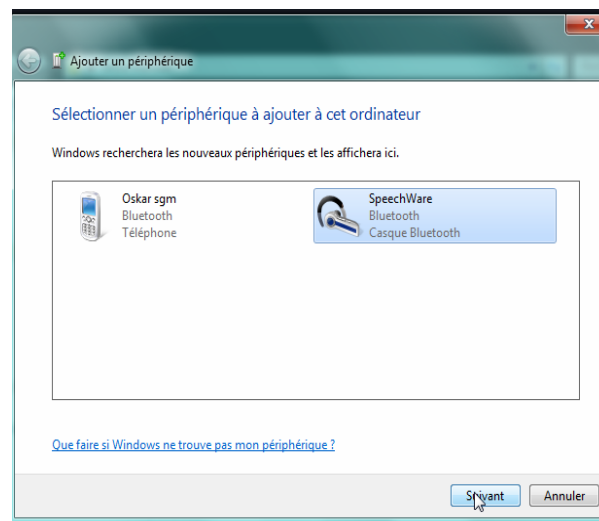


If you do not see a Bluetooth item in your Control Panel, it may need to be installed!

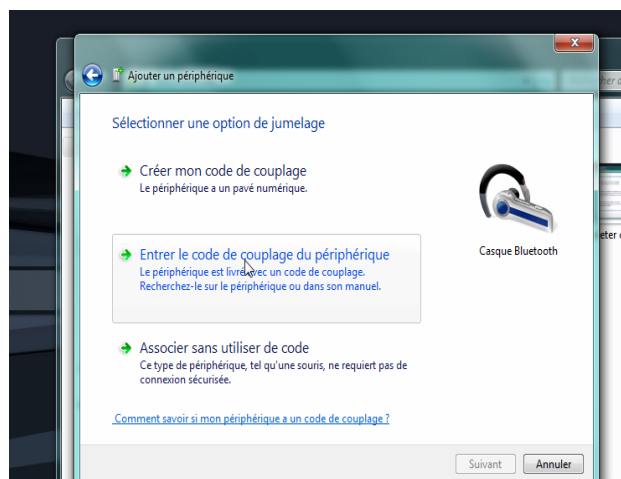
c) Right-click on the aforementioned Bluetooth icon of your Windows bar, and select the option “Add peripheral” (“Ajouter un périphérique”):



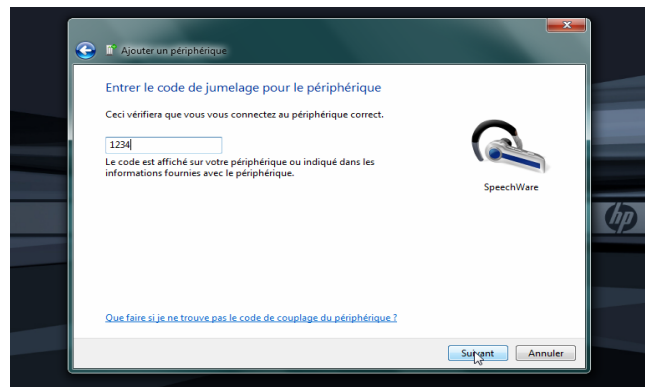
d) When the Bluetooth Transmitter (*FMK03*) is automatically detected by Windows Vista or 7, after a couple of minutes, it appears in this screen. Click next:



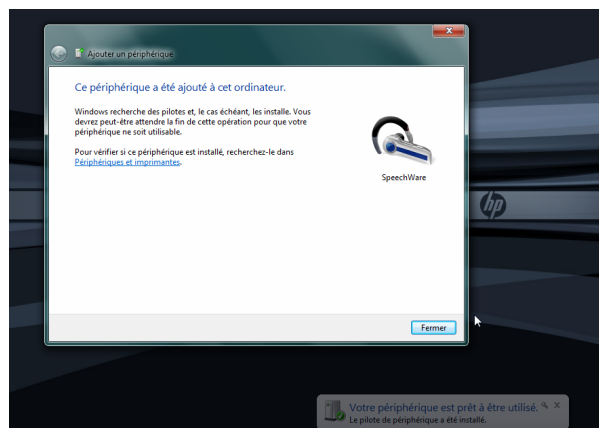
e) In this screen, left-click or select the second option:



f) Insert the pin number "1234" and press "Submit":



g) Click "Fermer" in the last window:

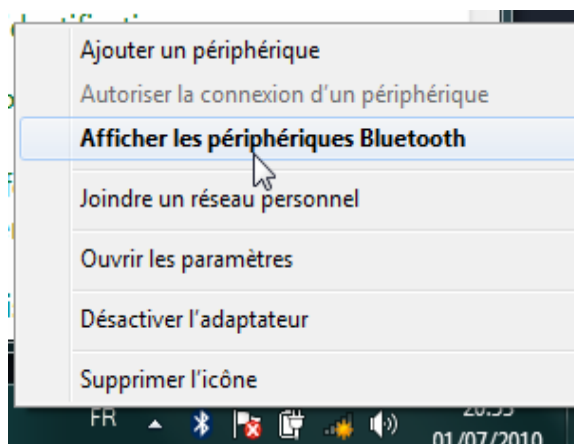


Now, your FlexyMike Bluetooth microphone is ready to be used under Windows Vista or 7!

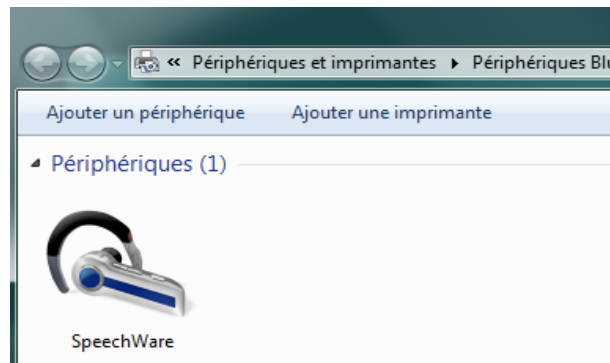
3. HOW TO CONNECT AGAIN THE FULL DUPLEX BLUETOOTH TRANSMITTER (FMK03) WHEN RESTARTING THE PC

If you need to establish again the Bluetooth connection, after restarting the PC, follow the next steps:

- a) With the Bluetooth Transmitter switched On, right-click on the Bluetooth icon of Windows bar and select now "Show the Bluetooth peripherals" ("Afficher les périphériques Bluetooth"):



b) Double-click on the SpeechWare microphone icon:



c) If there is no connection, in the next window, press "Connect" ("Connecter")

d) When the connexion is established again, the window will show it:

